

Dam: Platanovryssi

Country Greece

River Nestos

41°20'08.44"N 24°27'43.20"E

41.335678 24.462

Owner/Client Public Power Corporation (PPC)

Designer/Engineer DAYE, PPC and Malcolm Dunstan & Associates (MD&A)

Contractor AEGEK, Hidrogradnja, ASI-RCC J.V.

Purpose (code) H I

Site start 30.01.1989

RCC start 18.10.1995

RCC completion 10.03.1997

Site completion 30.06.1999

Height (m) 95

Length (m) 305

Volume of RCC ($m^3 \times 10^3$) 420

Total volume ($m^3 \times 10^3$) 440

Reservoir capacity ($m^3 \times 10^6$) 84

Upstream slope 0.10

Forming of upstream face (code) (14)

Downstream slope 0.75

Forming of downstream face (code) (14) *

Spillway slope 0.75

Forming of spillway face (code) (13)

Depth of layers (mm) 300

Depth of lifts (mm) 300

Cement content (kg/m^3) 50

Pozzolan content (kg/m^3) 225

Code for pozzolan (C)

RCCDAM Unique Serial No. RCCDAM0180

Under Construction



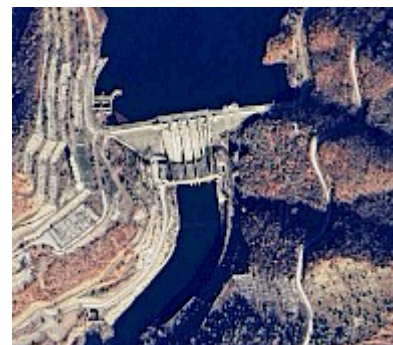
RCCDAM0180UC

Completed Dam



RCCDAM0180CD

Google Earth



RCCDAM0180GE

Guide to Abbreviations

Purpose

- E Environmental
- F Flood control
- G Groundwater recharge
- H Flood control
- I Irrigation
- N Navigation
- P Pollution control
- R Recreation
- W Water supply

Facing method

- (1) Traditional concrete against formwork
- (2) Traditional concrete against formwork with external geomembrane
- (3) RCC against formwork
- (4) RCC against formwork with external geomembrane
- (5) Traditional concrete against precast concrete panels
- (6) Traditional concrete against precast concrete panels with geomembrane
- (7) RCC against precast concrete panels
- (8) RCC against precast concrete panels with geomembrane
- (9) RCC against precast concrete panels with hot poured membrane
- (10) RCC against precast concrete blocks
- (11) Reinforced conventional concrete cast before RCC placement
- (12) Reinforced conventional concrete cast after RCC placement
- (13) Reinforced concrete cast against precast units or slip-formed facing elements
- (14) Slip-formed/extruded facing elements
- (15) RCC supported by fill shoulders
- (16) Mechanically compacted unformed face of RCC
- (17) Unformed face of RCC
 - ' GEVR/GE-RCC
 - * Stepped face

Pozzolans

- (-) No Pozzolan Used
- (C) High-lime flyash (ASTM Class C)
- (F) Low-lime flyash (ASTM Class F)
- (M) Milled sand
- (N) Natural pozzolan (ASTM Class N)
- (R) ROLAC (mixture of flyash and slag with or without limestone fines)
- (S) Ground-granulated blast-furnace slag
- (L) Mixture of GGBFS and limestone fines