

Dam: Santa Cruz do Apodi

Country Brazil

River Apodi

5°46'3.88"S 37°47'51.13"W

-5.767744 -37.797535

Owner/Client Secretaria Estadual do Meio Ambiente e Recursos Hídricos do Rio Grande do Norte

Designer/Engineer Unknown

Contractor Construtora OAS Ltda.

Purpose (code) F I R W

Site start 01.01.1998

RCC start 01.01.1999

RCC completion 31.12.2000

Site completion 11.03.2002

Height (m) 48

Length (m) 1660

Volume of RCC (m³x10³) 1023

Total volume (m³x10³) 1120

Reservoir capacity (m³x10⁶) 600

Upstream slope Unknown

Forming of upstream face (code) Unknown

Downstream slope Unknown

Forming of downstream face (code) Unknown

Spillway slope Unknown

Forming of spillway face (code) Unknown

Depth of layers (mm) 300

Depth of lifts (mm) 300

Cement content (kg/m³) 80

Pozzolan content (kg/m³) 0

Code for pozzolan (-)

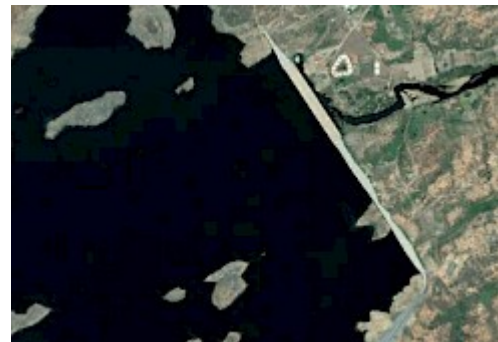
RCCDAM Unique Serial No. RCCDAM0245

Completed Dam



RCCDAM0245CD

Google Earth



RCCDAM0245GE

Guide to Abbreviations

Purpose

- E Environmental
- F Flood control
- G Groundwater recharge
- H Flood control
- I Irrigation
- N Navigation
- P Pollution control
- R Recreation
- W Water supply

Facing method

- (1) Traditional concrete against formwork
- (2) Traditional concrete against formwork with external geomembrane
- (3) RCC against formwork
- (4) RCC against formwork with external geomembrane
- (5) Traditional concrete against precast concrete panels
- (6) Traditional concrete against precast concrete panels with geomembrane
- (7) RCC against precast concrete panels
- (8) RCC against precast concrete panels with geomembrane
- (9) RCC against precast concrete panels with hot poured membrane
- (10) RCC against precast concrete blocks
- (11) Reinforced conventional concrete cast before RCC placement
- (12) Reinforced conventional concrete cast after RCC placement
- (13) Reinforced concrete cast against precast units or slip-formed facing elements
- (14) Slip-formed/extruded facing elements
- (15) RCC supported by fill shoulders
- (16) Mechanically compacted unformed face of RCC
- (17) Unformed face of RCC
 - ' GEVR/GE-RCC
 - * Stepped face

Pozzolans

- (-) No Pozzolan Used
- (C) High-lime flyash (ASTM Class C)
- (F) Low-lime flyash (ASTM Class F)
- (M) Milled sand
- (N) Natural pozzolan (ASTM Class N)
- (R) ROLAC (mixture of flyash and slag with or without limestone fines)
- (S) Ground-granulated blast-furnace slag
- (L) Mixture of GGBFS and limestone fines